



HP5000



HARLO

PRODUCTS

ESTABLISHED IN 1937

ENGINE

Model	Cummins QSF3.8L Tier 4 Final Emission Certified
Type	4 Cycle Turbocharged Diesel
Cylinders	4
Displacement	229 CID
Fuel Injection	Bosch Electronic
Fuel	Ultra Low Sulfur Diesel
Tank Capacity	24 Gallons
Cooling	Liquid Cooled
Engine Speeds	RPM
Max Speed	2500
Idle Speed	900
Horse Power	74 HP @ 2400 RPM
Maximum Torque	295 FT-LB @ 1600 RPM
Water Pump Style	Integral
Engine Oil	SAE 15W-40

HYDRAULICS

Main Pump Piston Type	Pressure Compensated
Pump Flow	35 GPM @ 2400 RPM
Tank Capacity	49 Quarts

TIRES

Front	16.9 x 24 (12 Ply)
Rear 2WD	11L - 16 (12 Ply)
Rear 4WD	12 - 16.5 (10 Ply)

ELECTRICAL

Voltage	12 Volts
Alternator	135 Amp
Battery	2 @ 950 CCA
Power Plugs	1 Standard

MAST

Forward Tilt	11 Degrees
Backward Tilt	15 Degrees
Side Shift	3" Left / 3" Right
Easy Ride Load Cushion	Yes

POWERTRAIN

Transmission	Synchromesh Synchro-Shuttle
Gear Ratios	4 Forward/ 4 Reverse
1st	5.603:1
2nd	3.480:1
3rd	1.584:1
4th	0.793:1
Travel Speeds	MPH
1st	3.9
2nd	6.2
3rd	13.9
4th	27.4
Torque Converter Ratio	2.64:1
Front / Rear Axle (4WD)	
Differential Ratio	2.33:1 / 2.46:1
Planetary Hub Ratio	6.923:1 / 6.00:1
Overall Ratio	16.15:1 / 12.80:1
Service Brake Type	Oil (Wet) Multi Disk
Parking Brake Type	Cable Activated
Parking Brake Location	Floor

OPERATOR ENVIRONMENT

STANDARD SAFETY: Adjustable Seat Cushion - Rear View Mirror - Seatbelt - FOP
Overhead Guard - See-thru Masts - A.N.S.I. B 56.6 Safety Compliant

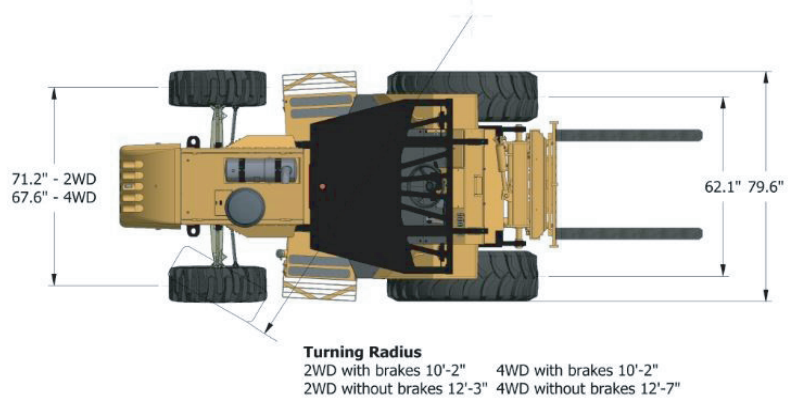
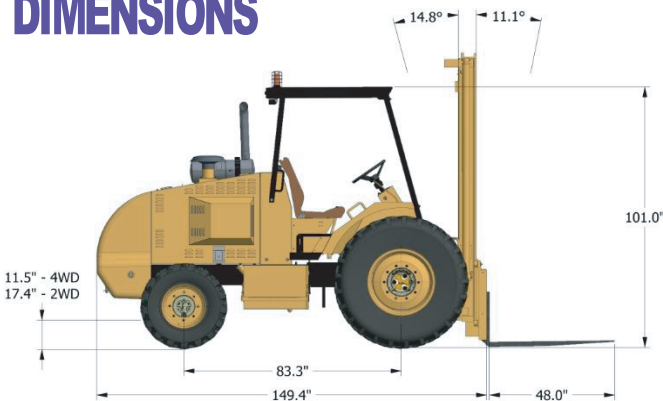
AUDIBLE ALARMS: Backup Alarm - Horn

GAUGES: Fuel Level - Hour Meter - Voltmeter - Coolant Temperature

WARNING LIGHTS

Engine Oil Pressure - Transmission Oil
Temperature - Air Cleaner Restriction
Alternator Charge - Engine Water
Temperature - Parking Brake
Fuel Level - Engine Preheat

DIMENSIONS



Turning Radius
2WD with brakes 10'-2" 4WD with brakes 10'-2"
2WD without brakes 12'-3" 4WD without brakes 12'-7"

Lift Height	Carriage Type	Carriage Width	Stage	Overall Lowered	Overall Extended	Capacity at 24" Load Center	2WD Weight	4WD Weight	Freelift
12' Roller	Notch ITA	48" 60" 72" 84"	2	113"	183"	5000lbs to 12'	11,697 lb	11,897 lb	None
14' Roller	Notch ITA	48" 60" 72"	3	95"	215"	5000lbs to 14'	11,947 lb	12,147 lb	58"
12' Roller	Swing Carriage	48"	2	113"	183"	5000lbs to 12'	11,697 lb	11,897 lb	None